

# COLPOSCOPE CAMERA

**MATA ELANG  
G1**







**Manufacturer**

PT Zenith Allmart Precisindo

**KEMENKES RI**

AKD 21106320070

-  Sidoarjo, East Java, Indonesia
-  (+62) 8113066886
-  [marketing@zenmed.co.id](mailto:marketing@zenmed.co.id)
-  [zenmed.co.id](http://zenmed.co.id)

## ABOUT THE PRODUCT

This product allows users to examine a patient's cervix with high resolution camera and screen.

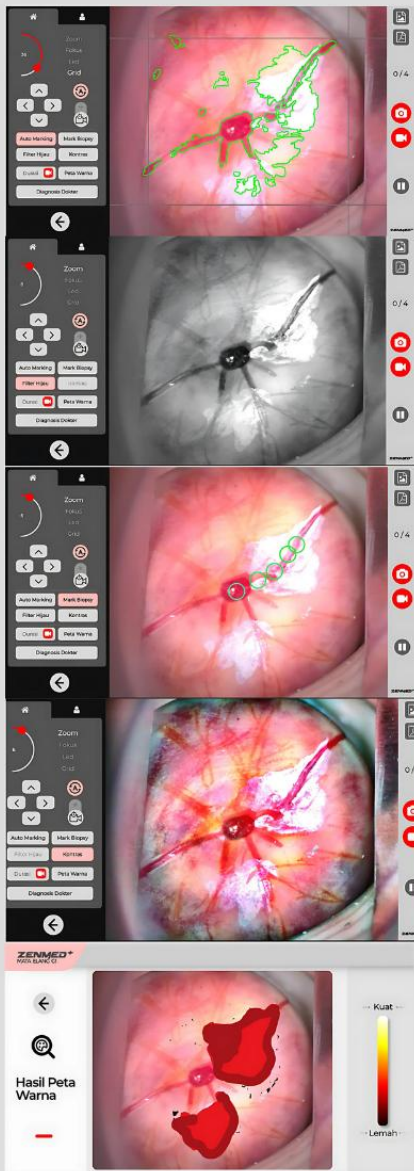
It is capable of displaying features to the user such as auto marking, biopsy marking, green filter, contrast, and color mapping. Therefore, the user can check the patient's cervix clearly and accurately

**THE FIRST  
COLPOSCOPE  
CAMERA  
CREATED BY  
THE NATION'S  
YOUTH**

# PRODUCT SPECIFICATION

## COMPONENT DESCRIPTION

COMPONENT	DESCRIPTION
Dimension	1013mm x 625mm x 1002mm
Camera	4K USB Camera Module with Sony IMX415 (1/2.8") sensor, CMOS Autofocus
Illumination	6 x 3Watt LED, up to 6000 Lumens lighting settings
Monitor	13,3" 4K OLED, Touch Screen, Resolution 3840 x 2160p, 60Hz, 550nit, Ratio 16:9
PC Processor	11th Gen Intel® Core(TM) i5-1135G7 @ 2.40GHz, 4 Cores 8 Threads
RAM	SODIMM 8GB DDR4
Storage	SSD 256GB
Voltage	19V
Battery	Lithium 33,6 Ah
Environment Temp	-20 ~ 70 degree Celcius (Transport & Storage) 0 ~ 60 degree Celcius (Operating Conditions)
Battery Consumption	45 - 60 Minutes (depend on usage)
Height Setting	0 - 120mm with hydraulic lever
Usage Distance	200 - 250mm
Camera Output	Image & Video Auto Marking Mark Biopsy Green Filter Contrast Color Mapping



Auto Marking

Green Filter

Mark Biopsy

Contrast

Color Mapping

Designed and Manufactured by **ZENMED+**

## FEATURES

### Adjustable Height

Provides doctor to easily adjust the height of the trolley up to 120mm by using the lever.

### Internal Cable Connection

The placement of the embedded cable connection inside the trolley body creates a clean and neat design.

### Double Arm Multi Axis dengan Ambient Light

Make it easy for doctor to position camera or display so as not to block the surgeon's view and working space during the examination.

### Power Supply Reserve

The surgeon can continue the examination even during a main power supply blackout.

### Pre Diagnostic

Provides examination parameters for initial diagnosis such as image and video capture, green filter, biopsy marker, contrast, color map, and auto marking and can be downloaded in PDF format.

### 4K Camera

Make it easy for doctors to analyze the condition of cervical with 4K resolution camera and auto focus and magnification features up to 40x.

### Mesmerizing Visual

Provides immersive images and data with 4K resolution OLED display on a 13.3" screen span with an easy-to-operate User Interface.

